



Optimum Solar Control

SWFcontract solar shade cloth combines solar control with a contemporary look to manage daylight and enhance architectural design intent. Our solar shade cloth maximizes natural light while controlling solar glare and heat gain while preserving outside views.

SWFcontract solar shade cloth systems are scalable for small, large, or custom projects. Whether you're future-proofing solar control for potential occupancy changes, or installing tailor-made shading and lighting controlled through a building management system, we have the products to make your project more efficient, cost-effective, and to create a better indoor environment for occupants and guests.

Ideal For
Corporate
Healthcare
Hospitality

SWFcontract is part of the commercial division of Springs Window Fashions, an industry leader in window coverings since 1939. SWFcontract has unmatched experience with our window coverings installed in more than one million commercial applications throughout North America.

SWFCONTRACT™



Shade Controls

No matter what the style, size, or design is for your next project, there are three ways to raise and lower solar window shades—intelligent, motorized, or manual lift systems.

Intelligent

The peak of solar control efficiency. As the sun changes position, and as sky conditions change, intelligent controls automatically raise and lower shades to reduce solar heat gain and glare. With an intelligent motorized system, you never need to worry about shade positioning for maximum solar control and occupant comfort.

Motorized

Raise and lower shades at the touch of a button. Motorized shades can be installed in a single window, an entire office, floor, or complete building and are ideal for windows that are large, hard to access, or for individuals with physical limitations. Motorized shades can be controlled by hard-wired or wireless controls.

Manual

Manual controls require a user to raise and lower shades individually regardless of style, size, or weight. Manual controls are easy to install and are ideal in corporate, hospitality, or educational applications where shades can be easily accessed.

Shade Cloth Features

SWFcontract's proprietary solar shade cloth meets the toughest specifications for design, quality, and performance in commercial applications.

Openness factors

Solar shade cloth has openness factors ranging from zero to 14% to control solar absorption and reflection while preserving outside views.

Railroading

For extra-wide windows, fabric is turned 90° and if necessary, panels can be seamed to fit the height of the window.

Anti-Microbial

These fabrics are resistant to micro organisms, bacteria, and fungi growth.

PVC-free

No PVC materials are in the finished product.

Fire Resistant

Meets NFPA 701 fire standards.

[Learn how to choose a shade cloth on next page](#) →



Greenguard Gold Certified

GreenGuard Gold is awarded to solar shade fabrics with low chemical emissions. These fabrics are acceptable in locations with children, the elderly, or people who have sensitive or compromised respiratory systems.

Learn More

Call us at [1-800-327-9798](tel:1-800-327-9798) or speak to your Regional Sales Manager. Our expert staff is standing by to help.

Free Swatches

See our extensive selection of colors for solar shades. swfcontract.com/swatches

Selecting Solar Shade Fabric

Building Orientation

	Sun Exposure	Fabric Performance	Fabric Openness
North	Less exposure	Less solar control required	>5%
South	High exposure	High solar control required	1 or 3%
East	Medium exposure	Moderate solar control required	3 or 5%
West	Medium exposure	Moderate solar control required	3 or 5%

Blackout Fabric

A zero-openness fabric that totally blocks daylight. Blackout fabric is ideal in A/V rooms, hotel rooms, conference rooms, and healthcare settings where complete darkness and privacy is a must.

Semi-Opaque Fabric

Featuring one to three percent openness factors which allow minimal daylight penetration. These fabrics provide the most solar control while still allowing outside views.

Sheer Fabric

Sheer fabrics have openness factors up to 14 percent allowing greater daylight into a room while preserving outside views.

Fabric Color

Darker colors absorb more solar radiation but allow better outside views. Lighter colors reflect more solar energy but restrict outside views. SWFcontract's unique, dual-sided fabrics combine the best of both light and dark colored fabrics to improve outside views while simultaneously reducing solar heat and glare.

Once you have decided what fabric fits your project, order free swatches online. [swfcontract.com/swatches](https://www.swfcontract.com/swatches)

SWFCONTRACT™

Your Trusted Partner | With a full line of commercial window coverings

At Springs Window Fashions, our goal is to create the best experience possible for our customers, end users, and associates. It's this commitment that sets us apart from the pack and raises the bar for quality and service in our industry. As part of the commercial division of Springs Window Fashions, SWFcontract embraces this commitment to excellence and strives to create a culture that includes a dedication to the following:

- Service excellence
- Product innovation and process improvement
- Associate involvement via our Quality at the Source program
- Strategic partnerships with key accounts and suppliers
- Supply chain management
- Protection of employees and the environment
- Social and community responsibility

CLEANING AND MAINTENANCE Instructions

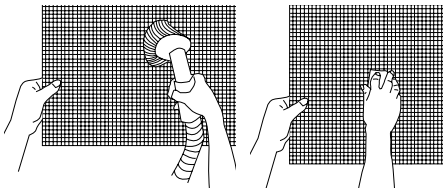
MAINTAINING YOUR DRAPER FLEXSHADES



Product: Motorized Shades/Dual Roller Shades. Location: Mercantile Gallery Loft Condominiums, Louisville, KY. Photographer: Kenneth Hayden, Louisville, KY.

CLEANING

Most of Draper's standard fabrics may be cleaned at the window by vacuuming with a soft brush attachment. They may also be cleaned by using a sponge or soft cloth and mild solution of warm soapy water. A dishwashing liquid, such as Ivory liquid, is recommended. A clean dry cloth is recommended for the metal finish. **Exceptions** are Flocké and Phifer SW7000 fabrics, which must be cleaned with a dry art sponge.

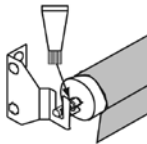


Left: Vacuuming with a soft brush attachment. Right: Cleaning with a soft cloth/art sponge.

Caution: Be sure to steady fabric with one hand during cleaning. Be careful not to jerk or place weight on the fabric. Depending on the installation hardware and substrate, placing too much weight on the fabric could result in mounting hardware being pulled loose.

LUBRICATION

Most window covering products manufactured by Draper, when properly installed, should require no operational maintenance or lubrication. However, Idlers on motorized shades may occasionally need lubrication. If lubrication is required, apply a small amount of a lithium based grease direct to the idler pin.

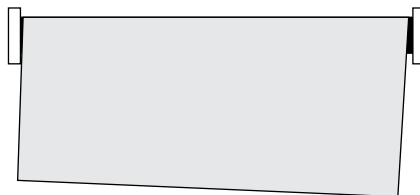


Applying a small amount of lithium based grease direct to the idler pin.

Caution: Take care to avoid spilling lithium-based grease on shade fabric.

KEEPING ON TRACK

Both fiberglass and polyester yarns can sometimes mis-track—also known as telescoping or not running exactly square with the roller. This is easily remedied by placing a piece of high quality gaffer tape about 1" wide on the exposed roller (where the fabric will cover it) on the side that you want the fabric drawn toward.



DON'T BE FRAYED

Although Draper uses modern cutting techniques that reduce the likelihood of frayed edges, any time a fabric is cut—whatever the method—there is a small possibility of fraying after some time in the field, depending on the usage of the product.

Polyester: In the event there is some fraying, repairs can be made on polyester by careful use of heat/flame to melt the frayed pieces away.

Fiberglass: If fraying does occur, scissors can be used to trim the fabric. Skimming fabric edges with a heavy duty, low scratching scour pad is also efficient. Because both fiberglass and polyester core yarns are white, fraying is more visible on dark colors.



Polyester Fabric with Fraying



Fiberglass fabric with Fraying

MANUAL Techmatic Roller Shade

AFFORDABLE OPTION FOR SMALLER WINDOW APPLICATIONS



Techmatic Roller Shades, Earlham College, Richmond, IN

- A manually-operated window shade, the Techmatic Roller Shade features a light-duty clutch that never needs adjusting. This shade provides an affordable option for smaller window applications.

FEATURES

- Bead chain clutch operator mounted right- (standard) or left-hand operation.
- Clutch available in white (standard) or black.
- Stainless steel bead chain (standard).
- Mounting brackets (standard). Optional fascia with endcaps, or headbox with closure.
- Fabric-covered fascia available.
- Varied hem bar options are available.
- Universal mounting brackets (inside, outside, or ceiling mounted options) for ease of installation. Optional 2 ¼" (57 mm) universal brackets available.
- Product designed for interior use.

OPTIONS

- Polyester chain available in white, black, brown, grey, or ivory at no extra charge.
- Hardware finish choices: clear anodized (standard), black, white, ivory, or charcoal bronze. Custom powder coat colors available.

SIZES

- Maximum shade width is 72" (183 cm), depending on fabric selection.

FABRIC OPTIONS

draperinc.com/windowshades/fabricoptions.aspx

WARRANTY

draperinc.com/warranty.aspx

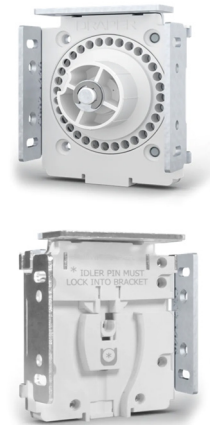
SUPPORTING DOCUMENTS

All instructions, technical drawings and other supporting documents are located at: draperinc.com/documents.aspx

For more information on this product visit: draperinc.com/windowshades/manualshades.aspx

MANUAL Clutch-Operated FlexShade® NEXD

READY FOR INSTALLATION



Residential Installation. Installer: Lakeview Shade & Screen, Richmond, IN.
Product: FlexShade NEXD. Fabric: Mermet Deco 3% in Tumbleweed and Flagstone colors.

- Easy to use and operate, the Clutch-Operated FlexShade® NEXD window shade offers a stylish way to change the look of indoor spaces without the use of automation. NEXD provides light control with a bead chain clutch. A height-adjustable idler bracket is included for fine leveling adjustment after installation. Various surface or recessed mounting options are available for your indoor application. Choose from solar, decorative, or privacy fabrics. With its hassle-free, maintenance-free clutch, and fine leveling adjustments, the Clutch-Operated FlexShade NEXD offers a long-lasting solution for residential, commercial, healthcare, institutional, and educational settings.

FEATURES

- Comes with mounting endcaps (standard). Optional fascia with endcaps, surface mounted headbox, or pocket mounted headbox available. Type D Pocket available as an accessory.
- Clutch available in white (standard) or black. Clutch has a single groove for easy alignment of the roller with the idler endcap.
- Steel mounting endcap with integrated NEXD Clutch.
- Height-adjustable idler endcap for fine leveling adjustments after installation.
- Pre-drilled jamb mounting holes.
- Clutch-operated products can be ANSI/WCMA A100.1 compliant for areas where small children are present.
- Product designed for interior use.

OPTIONS

- Optional dual rollers available upon request.
- Hardware finish choices: clear anodized (standard), black, white, ivory, or charcoal bronze. Custom powder coat colors available.
- Stainless steel bead chain (standard). Polyester chain available in white, black, brown, grey, or ivory at no extra charge. Bead chain clutch operator mounted right- (standard) or left-hand operation.
- Adhesive attachment available upon request in place of spline attachment (standard).

SIZES

- Maximum width for product exceeds 144" (366 cm), depending on fabric selection.
- Available in 3 hardware sizes: slim, small, and large. Where slim and small are available in the same size, small will be the default choice. The slim version offers a fully assembled cassette-style system with a 3 3/8" (86 mm) profile.

FABRIC OPTIONS

draperinc.com/windowshades/fabricoptions.aspx

WARRANTY

draperinc.com/warranty.aspx

SUPPORTING DOCUMENTS

All instructions, technical drawings and other supporting documents are located at: draperinc.com/documents.aspx

For more information on this product visit:
draperinc.com/windowshades/manualshades.aspx

MANUAL Clutch-Operated FlexShade®

SMOOTH, QUIET OPERATION, PLUS INDEPENDENT CONTROL



Clutch Operated FlexShade , Lake Anna YMCA, Barberton, OH, Dealer: EM Associates, Hudson, OH
Photography: © Jason Meyer, Feinknopf Photography, Columbus, OH

- The Clutch-Operated FlexShade® offers an institutional-grade window shade with smooth, quiet operation, plus independent control. These shades provide ease of use, longevity, and low maintenance for commercial, healthcare, and educational facilities.

FEATURES

- Universal mounting brackets and spring-loaded idler end provide ease of installation.
- Bead chain clutch operator mounted right- (standard) or left-hand operation.
- Clutch available in white (standard) or black.
- Stainless steel bead chain (standard).
- Hardware choices include universal brackets, endcaps with fascia, ceiling/wall or pocket style headbox.
- Small or large hardware options available.
- Dual roller hardware components include: Dual Roller Endcaps, Dual Roller Fascia, and Dual Roller Pocket Headbox. Options may vary by product type. See technical documents for details.
- Dual Roller Fascia finish choices: clear anodized (standard), black, white, ivory, or charcoal bronze. Custom powder coat colors available.

- Dual Roller Pocket Headbox finish choices: grey inside/white outside or white inside/grey outside with a white wall clip.
- Clutch-operated products can be ANSI/WCMA A100.1 compliant for areas where small children are present.
- Product designed for interior use.

OPTIONS

- Optional white or black universal mounting brackets to match clutch color available.
- Optional Spring Lift Assist is available for ease-of-operation.
- Polyester chain available in white, black, brown, grey, or ivory at no extra charge.
- Hardware finish choices: clear anodized (standard), black, white, ivory, or charcoal bronze. Custom powder coat colors available.

SIZES

- Available in sizes up to 12' wide x 12' high (366 cm x 366 cm), depending on fabric selection. Optional dual rollers available upon request.

FABRIC OPTIONS

draperinc.com/windowshades/fabricoptions.aspx

WARRANTY

draperinc.com/warranty.aspx

SUPPORTING DOCUMENTS

All instructions, technical drawings and other supporting documents are located at: draperinc.com/documents.aspx

For more information on this product visit: draperinc.com/windowshades/manualshades.aspx



LIMITED WARRANTY AND RETURN POLICY

YOUR PURCHASE IS COVERED

The quality of Draper® FlexShade® is unmatched. We're so sure that your window shades will look great and work well (and continue to do so) that we are offering a 25-year limited warranty on most interior shade products.

We just don't think you'll need it.

■ **Draper, Inc. warrants that its products are free from defects in material and workmanship for the following specified warranty periods:**

For Draper shading products installed indoors:

- 25 years for most Draper FlexShade® interior window shade hardware and fabrics (excluding PVC-free fabrics, clear vinyl, insect screens and the spring assist mechanism).
- 10 years for the Draper Techmatic, the Draper Spring Roller Window Shade, Draper FlexShade® ZIP, Skylight FlexShade®, LightBloc FlexShade® ZIP, FlexShade® ZIP XL, FlexShade® XL, Bottom Up FlexShade® hardware and fabrics (excluding PVC-free fabrics, clear vinyl and insect screens), and the spring assist mechanism used in any Draper window treatment product.
- 5 years for electronic accessories and motors for the above products, and all PVC-free fabrics and insect screens (excluding clear vinyl).
- 1 year for the Draper Custom Tension System, the Draper FlexLouver™ Rack Arm System and the Draper FlexWave Light Shelf and shading products from global partners and distributed by Draper.

For Draper shading products installed outdoors:

- 10 years on hardware for most Draper Exterior FlexShade models and Draper FlexShade ZIP and FlexShade ZIP XL.
- 5 years on electronic accessories and motors, fabric and insect screens (excluding clear vinyl) and hardware finish.
- 1 year for the Draper Custom Tension System, the Draper FlexLouver Rack Arm System and shading products from global partners and distributed by Draper.

For more details, please contact Draper or visit our website at

www.draperinc.com/warranty.aspx | 765.987.7999 | 800.238.7999



LIMITED WARRANTY AND RETURN POLICY

Limited Warranty

Draper, Inc. (“**Draper**”) warrants (this “**Limited Warranty**”) to the End User (the “**End User**”) that its products are free from defects in material and workmanship (except as provided below) for the specified warranty periods (each, a “**Warranty Period**”) provided below, which Warranty Periods begin on the date of shipment. This Limited Warranty is limited to the project for which the product was originally purchased.

For Draper window treatment products **installed indoors** and incorporating fabric specified in the bullets below:

- **25 years** for the mounting hardware, headbox, clutch, fascia and shade fabric (excluding PVC-free fabrics fabric with battens, clear vinyl and insect screens) for the Draper Manual FlexShade® product line, the Draper MotorizedFlexShade® product line, the Draper FlexShade®2 product line, the Draper Manual LightBloc FlexShade®, the Draper Motorized LightBloc FlexShade®, the Draper Skylight FlexShade® product line (standard and 2), the Draper Crank Operated FlexShade®, the Draper FlexShade® NEXD, FlexShade® Twin Pull, the Draper Bottom-Up FlexShade® product line, Draper FlexShade® Recharge, and the Draper Colossal FlexShade®,
- **10 years** for the mounting hardware, headbox, clutch, fascia and shade fabric (excluding PVC-free fabrics, fabric with battens, clear vinyl, and insect screens) for the Draper Techmatic, Draper Spring Roller Window Shade, Draper FlexShade® ZIP, Draper FlexShade® ZIP XL, and the Draper FlexShade® XL,
- **5 years** for the controls, electronic accessories and motors for the above products,
- **5 years** for PVC-free fabrics, insect screens, and fabric with battens (excluding clear vinyl) for the Draper Manual FlexShade product line, the Draper Motorized FlexShade product line, the Draper FlexShade 2 product line, the Draper Manual LightBloc FlexShade, the Draper Motorized LightBloc FlexShade, the Draper Skylight FlexShade product line (standard, 2, and 3), the Draper Crank Operated FlexShade, the Draper FlexShade NEXD, the Draper Bottom-Up FlexShade product line, the Draper Techmatic Window Shade, the Draper Spring Roller Window Shade and the Draper Colossal FlexShade, and
- **1 year** for the Draper Custom Tension System.

For Draper window treatment products **installed indoors** and **not** incorporating fabrics specified in the above section:

- **1 year** for the Draper FlexLouver Rack Arm System and the Draper FlexWave Light Shelf.
- **1 year** for interior products distributed, not manufactured, by Draper.

For the Draper **Spring Assist** mechanism:

- **10 years** for the spring assist mechanism used in any Draper window treatment product, including, but not limited to, the Draper Bottom-Up FlexShade product line, the Draper Manual FlexShade and the Draper Manual FlexShade NEXD.

For Draper window treatment products **installed outdoors**:

- **10 years** for the mounting hardware, headbox, clutch, and fascia for the Draper Exterior FlexShade product line, Draper FlexShade ZIP, Draper FlexShade ZIP XL and
- **5 years** for the mounting hardware, headbox, clutch, fascia, shade fabric (excluding clear vinyl), insect screens, controls, electronic accessories, hardware finish, and the Draper Custom Tension System
- **1 year** for exterior products distributed, not manufactured, by Draper.

This Limited Warranty extends to the original End User, and automatically to any successor owner or transferee of the End User provided that the product remains in the location of its original installation. This Limited Warranty is applicable to products that are repaired or replaced for the balance of the Warranty Period or for ninety (90) days from the date the product is repaired or replaced, whichever is longer.

If a product breaches this Limited Warranty, the End User may make a claim on this Limited Warranty in accordance with the Claims Procedures, as set forth below, within a reasonable time after the End User discovers the defect. Subject to the conditions and limitations set forth below (the **“Excluded Items”**), Draper, through a Draper Authorized Dealer (a **“Dealer”**) will, at its discretion, either repair or replace any part of the product that proves defective by reason of improper workmanship or materials.

No person, including any sales representative or other employee or agent of Draper, has the authority to (a) bind Draper to any warranty, representation or remedy except those expressly set forth herein or (b) modify, change, vary or increase this warranty or any remedy set forth herein.

TOTAL LIABILITY OF DRAPER UNDER THIS OR ANY OTHER WARRANTY, EXPRESS OR IMPLIED, IS LIMITED TO REPAIR, REPLACEMENT OR REFUND. REPAIR, REPLACEMENT OR REFUND ARE THE SOLE AND EXCLUSIVE REMEDIES FOR BREACH OF WARRANTY OR ANY OTHER LEGAL THEORY. IN NO EVENT SHALL DRAPER BE LIABLE FOR ANY BACK CHARGES OR FOR ANY INCIDENTAL, INDIRECT, CONSEQUENTIAL, SPECIAL, EXEMPLARY OR PUNITIVE DAMAGES, WHETHER RESULTING FROM THE PURCHASE, USE, MISUSE, INABILITY TO USE OR INABILITY TO INSTALL THE PRODUCT OR FROM DEFECTS IN THE PRODUCT.

SOME STATES DO NOT ALLOW THE EXCLUSION OR LIMITATION OF INCIDENTAL OR CONSEQUENTIAL DAMAGES, SO THE ABOVE LIMITATION OR EXCLUSION MAY NOT APPLY.

THIS LIMITED WARRANTY IS THE EXCLUSIVE WARRANTY GIVEN BY DRAPER FOR THE PRODUCT AND IS IN LIEU OF ALL OTHER WARRANTIES. DRAPER DISCLAIMS ALL OTHER WARRANTIES, WHETHER EXPRESS, IMPLIED OR STATUTORY, INCLUDING ANY WARRANTY OF MERCHANTABILITY, ANY WARRANTY OF FITNESS FOR A PARTICULAR PURPOSE AND ANY IMPLIED WARRANTIES ARISING FROM A COURSE OF DEALING OR USAGE OF TRADE. THIS WARRANTY SUPERSEDES ALL OTHER WARRANTIES, INCLUDING ANY WARRANTIES BASED ON ORAL REPRESENTATIONS.

THIS LIMITED WARRANTY GIVES THE END USER SPECIFIC LEGAL RIGHTS, AND THE END USER MAY HAVE. OTHER RIGHTS WHICH VARY FROM STATE TO STATE.

Excluded Items

THIS LIMITED WARRANTY DOES NOT COVER DEFECTS CAUSED BY negligence; improper maintenance; improper storage; improper wiring; accident; misuse; installation not in accordance with printed installation instructions from Draper; abuse; impact or other force, whether prior or subsequent to installation; operation in a manner contrary to design or use in a manner contrary to or in excess of specifications, drawings or instruction of Draper; application other than intended use; use with electrical accessories or parts, including switches, relays or other accessory components not previously approved in writing by Draper; failure to comply with all written instructions and specifications from Draper; improper cleaning, maintenance, care or repair; normal wear and tear; fire, lightning, tornadoes or other acts of God; excessive electrical supply; contact with food; abnormal mechanical or environmental conditions; unauthorized disassembly, repair or modification; service by unauthorized provider; installation of unapproved third party products; buyer's remorse. This Warranty also does not apply to any product on which the original identification information has been altered, obliterated or removed, or which has been sold as second-hand.

IN ADDITION, WITH RESPECT TO THE DRAPER INTERIOR LINE OF FLEXSHADE PRODUCTS, THIS LIMITED WARRANTY DOES NOT COVER DEFECTS CAUSED BY use for non-interior applications or exposure to outdoor environmental conditions; contact with liquid, water, rain, extreme humidity or heavy perspiration, sand, dirt or the like or extreme heat.

This Warranty does not apply to any defects or damage caused by, arising out of or related to the installation of the product. Because Draper is not responsible or liable for the installation of the product, the End User should contact the Dealer from which the End User originally purchased the product in the event of a claim related to installation.

Draper does not warrant any images or artwork reproduced, printed or placed on shade cloth by Draper or any other imaging supplier. Draper is not responsible or liable for fading, discoloration, color shifts or any other failure or defect in such images or artwork.

Draper does not warrant bead chains on any of its products.

Draper does not warrant against freight damage, concealed or otherwise.

Claims Procedure

To make a valid and proper claim under this Limited Warranty, the End User **must notify the Dealer from which it purchased the product within the applicable Warranty Period.** The Dealer will then work directly with Draper to process the warranty claim. Draper will take those steps it determines to be reasonable and necessary, including inspection of the product, to determine whether the product is defective by reason of improper workmanship or materials. If, in its sole discretion, Draper determines that the product is defective by reason of improper workman-ship or materials, Draper will replace or repair the product. **The End User shall not return the product unless requested to do so by the Dealer and/or Draper.**

Governing Law; Dispute Resolution

This Limited Warranty and the rights contemplated hereby shall be governed by and interpreted in accordance with the laws of the State of Indiana, without regard to its choice or conflict of law principles. Any legal action arising under or relating to Limited Warranty shall be settled by binding arbitration in the State of Indiana, unless otherwise agreed by Draper and the warranty holder. The arbitration shall be conducted on a confidential basis pursuant to the Commercial Arbitration Rules of the American Arbitration Association. Any decision or award as a result of any such arbitration proceeding shall be in writing and shall provide an explanation for all conclusions of law and fact and shall include the assessment of costs and expenses but not attorneys' fees. Each party shall bear its own attorneys' fees in connection with any such arbitration. Any such arbitration shall be conducted by an arbitrator experienced in window treatments or with legal experience required for such arbitration and shall include a written record of the arbitration hearing. The parties reserve the right to object to any individual who shall be employed by or affiliated with a competing organization or entity. An award of arbitration may be enforced by a court of competent jurisdiction. All arbitration costs shall be shared by the parties unless otherwise ordered by the arbitrator.

Effective Date; Amendment

This Limited Warranty shall be effective as of May 19, 2021 and shall only apply to products purchased on or after such date.

Draper reserves the right to amend, modify or withdraw this Limited Warranty or any provisions herein at any time without notice to any party. Any such amendment, modification or withdrawal will not affect any product purchased prior to the date of such amendment, modification or withdrawal.

SPECIALTY SHADES Bottom-Up FlexShade®

MOTORIZED OR MANUAL



Bottom-up FlexShade, Texas A&M University, Central Texas, Killeen, TX. Dealer: Tri-Tex Enterprises, Inc., Dallas, TX. Photography: © Scott Williams, Scott Williams Photography, Dallas, TX.

■ The Bottom-Up FlexShade® window shade rises from a roller at the bottom of the window sill, utilizing natural daylighting to its fullest extent. Harvesting daylight by blocking the sun's rays at the bottom of the window allows sunlight to pass comfortably above people and objects adjacent to the window. It protects work surfaces near windows from harsh glare and excess heat while also providing privacy. Creating a more comfortable work or living environment makes the Bottom-Up FlexShade ideal for home and office spaces.

FEATURES

- Motorized or manual operation available.
- Mounting brackets (standard).
- Hem bar is extruded aluminum finish to match fascia.
- Clutch-operated products can be ANSI/WCMA A100.1 compliant for areas where small children are present.
- Product designed for interior use.

OPTIONS

- Optional fascia with endcaps, or headbox with closure.
- Hardware finish choices: clear anodized (standard), black, white, ivory, or charcoal bronze. Custom powder coat colors available.

SIZES

- Available in sizes through 12' x 12' (366 cm x 366 cm), depending on fabric selection.

FABRIC OPTIONS

draperinc.com/windowshades/fabricoptions.aspx

WARRANTY

draperinc.com/warranty.aspx

SUPPORTING DOCUMENTS

All instructions, technical drawings and other supporting documents are located at: draperinc.com/documents.aspx

For more information on this product visit: draperinc.com/windowshades/specialtyshades.aspx